



**POLICY FOR SAFEGUARDING
INCORPORATING CHILD PROTECTION**
Updated July 2023

WITH 4WARD SPORTS

Policy Consultation & Review

This policy is available on our website and is available on request.

We recognise the expertise our staff build by undertaking safeguarding training and managing safeguarding concerns daily and we therefore invite staff to contribute to and shape this policy and associated safeguarding arrangements.

The policy is provided to all staff at induction alongside our Staff Code of Conduct, behaviour policy and the safeguarding response to those pupils who are absent from education.

This policy will be reviewed in full on an annual basis. This policy was last reviewed: 5th August 2023

Signature

Neil Ward

Date:

PURPOSE & AIMS

The purpose of the 4ward sports safeguarding policy is to ensure every child who is a registered pupil at our school is safe and protected from harm. This means we will always work to:

- Protect children and young people at our school from maltreatment.
- Prevent impairment of our children's and young people's mental and physical health or development.
- Ensure that children and young people at our school grow up in circumstances consistent with the provision of safe and effective care.
- Undertake that role to enable children and young people at our school to have the best outcomes.

This policy will give clear direction to all staff including supply staff, volunteers, visitors and parents about expected behaviour and our legal responsibility to safeguard and promote the welfare of all children at our school.

4ward sports fully recognises the contribution it can make to protect children from harm and supporting and promoting the welfare of all children who are registered pupils at our school. The elements of our policy are prevention, protection and support.

We recognise that our safeguarding responsibilities are clearly linked to our responsibilities for ensuring that appropriate safeguarding responses are in place for children who are absent from school or who go missing from education, particularly for prolonged periods and/or on repeat occasions. The Attendance Lead will regularly liaise with the Designated Safeguarding Lead to discuss all persistently absent pupils and those who go missing to identify the risk of abuse and neglect including sexual abuse or exploitation and to ensure that appropriate safeguarding responses have been put in place to reduce the risk of future harm.

This policy applies to all pupils, staff, parents, volunteers and visitors.

OUR ETHOS

The child's welfare is of paramount importance. 4ward sports will establish and maintain an ethos where pupils feel secure, are encouraged to talk, are listened to and are safe. Children at our Club will be able to talk freely to any member of staff at our school if they are worried or concerned about something. All staff will reassure victims that they are being taken seriously and that they will be supported and kept safe. Victims will never be given the impression that they are creating a problem by reporting abuse, sexual violence or sexual harassment.

Everyone who comes into contact with children and their families has a role to play in safeguarding children. We recognise that staff at our school play a particularly important role as they are able to identify concerns early and provide help for children to prevent concerns from escalating. **All staff are advised to maintain an attitude of 'it could happen here' where safeguarding is concerned.** When concerned about the welfare of a child, staff members must always act in the **best interests** of the child.

4ward sports will ensure that safeguarding and child protection is at the forefront and underpin all relevant aspects of process and policy development. We operate with the best interests of the child at their heart.

Where there is a safeguarding concern, the child's wishes and feelings are taken into account when determining what action to take and what services to provide. The systems we have in place are well promoted, easily understood and easily accessible for children to confidently report abuse, knowing their concerns will be treated seriously, and knowing they can safely express their views and give feedback.

All staff and regular visitors will, through training and induction, know how to recognise indicators of concern, how to respond to a disclosure from a child and how to record and report this information. We will not make promises to any child, and we will not keep secrets. Every child will know what the adult will have to do with any information they have chosen to disclose. All staff will be trained to recognise that children may not feel ready or know how to tell someone that they are being abused, exploited, or neglected, and/or they may not recognise their experiences as harmful.

We will provide activities and opportunities for children to develop the knowledge, values and skills they need to identify risks, including knowing when and how to ask for help for themselves and others to stay safe (this includes online). The Relationships Education, Relationships and Sex Education and Health Education (delivered in regularly timetabled lessons and reinforced throughout the whole curriculum) will cover relevant topics in an age and stage appropriate way, enabling pupils to learn about their rights and responsibilities to behave and stay safe in a variety of contexts on and offline. This will provide further reinforcement to help children identify risks, know when to seek support and develop the skills to ask for help from trustworthy, reliable sources. We achieve this by:

As part of our responsibilities for safeguarding and promoting the welfare of children, we will provide a co-ordinated offer of early help when additional needs of children are identified. These may include if a child:

- is disabled and has specific additional needs;
- has special educational needs (whether or not they have a statutory education, health and care plan);
- has a mental health need;
- is a young carer;
- is showing signs of being drawn in to anti-social or criminal behaviour, including gang involvement and association with organised crime groups;
- is frequently missing/goes missing from care or from home;
- is misusing drugs or alcohol themselves;
- is at risk of modern slavery, trafficking or exploitation;
- is in a family circumstance presenting challenges for the child, such as substance abuse, adult mental health problems or domestic abuse;
- has returned home to their family from care;
- is showing early signs of abuse and/or neglect;
- is at risk of being radicalised or exploited;
- is at risk of 'honour'-based abuse such as Female Genital Mutilation or Forced Marriage;
- is a privately fostered child
- has a family member in prison, or is affected by parental offending;
- is persistently absent from education, including persistent absences for part of the school day.

At 4ward sports we understand the importance of working in a way that adheres to the following legislation:

- The Human Rights Act 1998
- Equality Act 2010
- Public Sector Equality Duty

This means we do not unlawfully discriminate against pupils because of their sex, race, disability, religion or belief, gender reassignment, pregnancy and maternity, or sexual orientation (protected characteristics).

.ROLES AND RESPONSIBILITIES

Role	Name	Contact details
Designated Safeguarding Lead (DSL)	Neil Ward	07879532930
Deputy safeguarding lead (If Mr Ward is not on site)	Niki Hemmings	07879772331

It is the responsibility of every member of staff, volunteer and regular visitor to our school to ensure that they carry out the requirements of this policy and, at all times, work in a way that will safeguard and promote the welfare of all of the pupils at this school. This includes the responsibility to provide a safe environment in which children can learn.

4ward sports will:

- Identifying a senior member of staff from leadership team to be the Designated Safeguarding Lead (DSL);
- Identifying alternate members of staff to act as the Designated Safeguarding Lead (DSL) in his/her absence to ensure there is always cover for the role;
- Ensuring that the policies and procedures adopted by the governing body, particularly concerning referrals of cases of suspected abuse and neglect, are followed by all staff;
- Ensuring that all staff and volunteers feel able to raise concerns about poor or unsafe practice and such concerns are addressed sensitively in accordance with agreed whistle-blowing procedures;
- Liaise with the LADO in the event of an allegation of abuse being made against a member of staff or volunteer.

The Designated Safeguarding Lead (DSL)

The Designated Safeguarding Lead is a senior member of staff, from the leadership team who takes lead responsibility for safeguarding and child protection within our club.

The DSL will provide advice and support to other staff on child welfare and child protection matters. Any concern for a child's safety or welfare will be recorded in writing and given to the DSL.

The DSL will maintain records and child protection files ensuring that they are kept confidential and stored securely

The DSL is responsible for ensuring that all staff members and volunteers are aware of our policy and the procedure they need to follow. They will ensure that all staff, volunteers and regular visitors have received appropriate child

TRAINING & INDUCTION

When new staff join our team they will be informed of the safeguarding arrangements in place. They will be given a copy of our safeguarding policy along with the staff code of conduct, and told who our Designated Safeguarding Lead (DSL) and Deputy DSLs are. They will also receive a copy of the behaviour policy.

Every new member of staff or volunteer will receive safeguarding training during their induction period. This programme will include information relating to signs and symptoms of abuse, how to manage a disclosure from a child (including reassuring victims that they are being taken seriously and that they will be supported and kept safe), how to record, the processes for referral to Children's Services and the statutory assessments. The training will also include information about whistleblowing in respect of concerns about another adult's behaviour and suitability to work with children. Staff will also receive online safety training, including understanding the expectations, applicable roles, and responsibilities in relation to filtering and monitoring as this is part of the overarching safeguarding approach of our school.

In addition to the safeguarding induction, we will ensure that mechanisms are in place to assist staff to understand and discharge their role and responsibilities as set out in Part one of *'Keeping Children Safe in Education'*. In order to achieve this, we will ensure that:

- all members of staff will undertake appropriate safeguarding training on an annual basis and we will evaluate the impact of this training;
- all staff members receive regular safeguarding and child protection updates (for example, via email, e-bulletins, staff meetings), as required, but at least annually, to provide them with relevant skills and knowledge to safeguard children effectively;

All regular visitors, temporary staff and volunteers to our school will be given a set of our safeguarding procedures; they will be informed of whom our DSL and alternate staff members are and what the recording and reporting system is.

The DSL, the alternate designated member(s) of staff and any other senior member of staff who may be in a position of making referrals or attending child protection conferences or core groups will attend one of the multi-agency training courses organised by Norfolk Safeguarding Children's Partnership at least once every three years. The DSL and alternate will attend Designated Safeguarding Lead (DSL) training provided by the Local Authority every two years. In addition to formal training, DSL will ensure that they update their knowledge and skills at regular intervals, but at least annually, to keep up with any developments relevant to their role.

effective and support the delivery of a robust whole school approach to safeguarding. This training takes place at induction and is updated regularly.

PROCEDURES FOR MANAGING CONCERNS

We adhere to child protection procedures that have been agreed locally through the Norfolk Safeguarding Children Partnership. Where we identify children and families in need of support, we will carry out our responsibilities in accordance with [Norfolk Local Assessment Protocol](#) and the [Norfolk Threshold Guidance](#).

Every member of staff including volunteers working with children at our school are advised to maintain an attitude of '*it could happen here*' where safeguarding is concerned. When concerned about the welfare of a child, staff members should always act in the interests of the child and have a responsibility to take action as outline in this policy.

All staff are encouraged to report any concerns that they have and not see these as insignificant. On occasions, a referral is justified by a single incident such as an injury or disclosure of abuse. More often however, concerns accumulate over a period of time and are evidenced by building up a picture of harm over time; this is particularly true in cases of emotional abuse and neglect. In these circumstances, it is crucial that staff record and pass on concerns in accordance with this policy immediately to allow the DSL to build up a picture and access support for the child at the earliest opportunity. A reliance on memory without accurate and contemporaneous records of concern could lead to a failure to protect.

It is *not* the responsibility of 4ward sports staff to investigate welfare concerns or determine the truth of any disclosure or allegation. All staff, however, have a duty to recognise concerns and pass the information on in accordance with the procedures outlined in this policy.

The Designated Safeguarding Lead (DSL) should be used as a first point of contact for concerns and queries regarding any safeguarding concern in our club. Any member of staff or visitor to the club who receives a disclosure of abuse or suspects that a child is at risk of harm must report it immediately to the DSL or, if unavailable, to the alternate designated person. In the absence of either of the above, the matter should be brought to the attention of the most senior member of staff.

All concerns about a child or young person should be reported without delay and recorded in writing using the agreed system in the setting. Records should include:

- a clear and comprehensive summary of the concern
- details of how the concern was followed up and resolved
- a note of any action taken, decisions reached and the outcome

Following receipt of any information raising concern, the DSL will consider what action to take and seek advice from the Norfolk Children's Advice & Duty Service (CADS) as required. All information and actions taken, including the reasons for any decisions made, will be fully documented.

All referrals will be made in line with Norfolk Children's Services procedures a

If, at any point, there is a risk of immediate serious harm to a child a referral should be made to Norfolk CADS immediately. Anybody can make a referral in these circumstances. If the child's situation does not appear to be improving the staff member with concerns should press for re-consideration by raising concerns again with the DSL and/or the Headteacher. Concerns should always lead to help for the child at some point.

Staff should always follow the reporting procedures outlined in this policy in the first instance. However, they may also share information directly with Norfolk CADS, or the police if:

- the situation is an emergency and the designated senior person, their alternate and the Headteacher are all unavailable;
- they are convinced that a direct report is the only way to ensure the pupil's safety.

Any member of staff who does not feel that concerns about a child have been responded to appropriately and in accordance with the procedures outlined in this policy should raise their concerns with the Headteacher of the school 4ward sports occupy or the Chair of Governors. If any member of staff does not feel the situation has been addressed appropriately at this point should contact Norfolk CADS directly with their concerns.

SPECIFIC SAFEGUARDING ISSUES

Contextual safeguarding

At 4ward sports we recognise that safeguarding incidents and/or behaviours can be associated with factors outside of the school environment and/or can occur between children outside of the school. This is known as contextual safeguarding. It is key that all school staff understand the definition of contextual safeguarding and consider whether children are at risk of abuse or exploitation in situations outside their families. Through training we will ensure that staff and volunteers are aware that extra-familial harms take a variety of different forms and children can be vulnerable to multiple harms including (but not limited to) sexual exploitation, criminal exploitation, and serious youth violence. When reporting concerns, staff should include as much information and background detail as possible so the DSL can make a referral with a holistic view of the child. This will allow any assessment to consider all the available evidence and the full context of any abuse.

We recognise that children with special educational needs and/or disabilities (SEND) can face additional safeguarding challenges and these are discussed in staff training. These additional barriers can include:

- assumptions that indicators of possible abuse such as behaviour, mood and injury relate to the child's disability without further exploration;

- children with SEN and disabilities can be disproportionately impacted by things like bullying- without outwardly showing any signs; and
- communication barriers and difficulties in overcoming these barriers.

At 4 ward sports we recognise that a previously looked after child potentially remains vulnerable and all staff should have the skills, knowledge and understanding to keep previously looked after children safe. When dealing with looked after children and previously looked after children, it is important that all agencies work together, and prompt action is taken when necessary to safeguard these children, who are a particularly vulnerable group.

Child Sexual Exploitation (CSE), Child Criminal Exploitation (CCE): County Lines and serious violence

We train staff to recognise that both CSE and CCE are forms of abuse and both occur where an individual or group takes advantage of an imbalance in power to coerce, manipulate or deceive a child into sexual or criminal activity. Whilst age may be the most obvious, this power imbalance can also be due to a range of other factors including gender, sexual identity, cognitive ability, physical strength, status, and access to economic or other resources. Victims can be exploited even when activity appears consensual and it should be noted exploitation as well as being physical can be facilitated and/or take place online.

We recognise that Child Sexual Exploitation is a form of child sexual abuse and this imbalance of power coerces, manipulates or deceives a child or young person into sexual activity (a) in exchange for something the victim needs or wants, and/or (b) for the financial advantage or increased status of the perpetrator. Child sexual exploitation does not always include physical contact, it can also occur through the use of technology. We understand that some children may not realise they are being exploited e.g. they may believe they are in a genuine romantic relationship.

We understand that criminal exploitation of children is a geographically widespread form of harm that is a typical feature of county lines criminal activity. Drug networks or gangs groom and exploit children and young people to carry drugs and money from urban areas to suburban and rural areas, market and seaside towns. Key to identifying potential involvement in county lines are missing episodes, when the victim may have been trafficked for the purpose of transporting drugs.

We understand that children can become trapped by this type of exploitation as perpetrators can threaten victims (and their families) with violence or entrap and coerce them into debt. They may be coerced into carrying weapons such as knives or begin to carry a knife for a sense of protection from harm from others. We will treat these children as victims understanding that they have been criminally exploited even if the activity appears to be something they have agreed or consented to. We recognise the experience of girls who are criminally exploited can be very different to that of boys and that

both boys and girls being criminally exploited may be at higher risk of sexual exploitation.

Our staff are aware of the indicators and risk factors which may signal a child is vulnerable to or involved with serious violent crime. We make reference to the Home Office's [Preventing youth violence and gang involvement](#) and [Criminal exploitation of children and vulnerable adults: county lines](#) guidance for more information.

If a child is suspected to be at risk of or involved in county lines, a referral to the Children's Advice and Duty Service (CADS) will be made alongside consideration of availability of local services/third sector providers who offer support to victims of county lines exploitation.

So-called 'honour-based violence (including Female Genital Mutilation and Forced Marriage)

We recognise that our staff are well placed to identify concerns and take action to prevent children from becoming victims of Female Genital Mutilation (FGM) and other forms of so-called 'honour-based' violence (HBV) and provide guidance on these issues through our safeguarding training. If staff have a concern regarding a child that might be at risk of HBV, they should inform the DSL who will activate local safeguarding procedures, using existing national and local protocols for multiagency liaison with police and children's social care.

Where FGM has taken place, since 31 October 2015 there has been a mandatory reporting duty placed on teachers. [Section 5B of the Female Genital Mutilation Act 2003](#) (as inserted by section 74 of the Serious Crime Act 2015) places a statutory duty upon teachers in England and Wales, to report to the police where they discover (either through disclosure by the victim or visual evidence) that FGM appears to have been carried out on a girl under 18. Those failing to report such cases will face disciplinary sanctions. We will provide guidance and support to our staff on this requirement and further information on when and how to make a report can be found in the following Home Office guidance: [Mandatory Reporting of Female Genital Mutilation- procedural information](#) Home Office (January 2020)

We recognise that forcing a person into a marriage is a crime in England and Wales. A forced marriage is one entered into without the full and free consent of one or both parties where violence, threats or any other form of coercion is used to cause a person to enter into a marriage. Threats can be physical or emotional and psychological. Since February 2023 it has also been a crime to carry out any conduct whose purpose is to cause a child to marry before their eighteenth birthday, even if violence, threats or another form of coercion are not used. The Forced Marriage Unit has [statutory guidance](#) and [Multi-agency guidelines](#) and can be contacted for advice or more information: Contact 020 7008 0151 or email fm@fco.gov.uk

Preventing radicalisation and extremism

We recognise that safeguarding against radicalisation and extremism is no different to safeguarding against any other vulnerability in today's society. We will ensure that:

- Through training, staff, have an understanding of what radicalisation and extremism is, why we need to be vigilant in school and how to respond when concerns arise.
- There are systems in place for keeping pupils safe from extremist material when accessing the internet in our school by using effective filtering and usage policies.
- The DSL has received Prevent training and will act as the point of contact within our school for any concerns relating to radicalisation and extremism.
- The DSL will make referrals in accordance with [Norfolk Channel Procedures](#) and will represent our school at Channel meetings as required.
- Through our curriculum, we will promote the spiritual, moral, social and cultural development of pupils.

Child on child sexual violence and sexual harassment

All staff are trained so that they are aware that safeguarding issues can manifest themselves via child on child abuse. This is most likely to include, but may not be limited to:

- bullying (including cyberbullying);
- physical abuse such as hitting, kicking, shaking, biting, hair pulling, or otherwise causing physical harm;
- sexual violence and sexual harassment;
- upskirting;
- sexting (also known as youth produced sexual imagery); and
- initiation/hazing type violence and rituals.

We recognise that children are vulnerable to physical, sexual and emotional abuse by other children or siblings. Abuse perpetrated by children can be just as harmful as that perpetrated by an adult, so it is important that all staff and volunteers to remember the impact on both the victim of the abuse as well as to focus on the support for the child or young person exhibiting the harmful behaviour. We understand that abuse can occur in intimate personal relationships between children; and that consensual and non-consensual sharing of nudes and semi nudes images and or videos¹ (also known as sexting or youth produced sexual imagery) is a form of child on child abuse.

We understand, that even if there are no reports in our setting it does not mean it is not happening, it may be the case that it is just not being reported. We recognise that pupils may not find it easy to tell staff about their abuse and can show signs or act in ways that they hope adults will notice and react to. In some cases, the victim may not make a direct report, and this may come

from a friend or a conversation that is overheard. Such abuse will always be taken as seriously as abuse perpetrated by an adult and the same safeguarding children procedures will apply in respect of any child who is suffering or likely to suffer significant harm. Staff must never tolerate or dismiss concerns relating to child on child abuse and they will always challenge this. It must never be tolerated or passed off as 'banter', 'just having a laugh' or 'part of growing up'. Doing this can lead to a culture of unacceptable behaviours, an unsafe environment for children and in worst case scenarios a culture that normalises abuse leading to children accepting it as normal and not coming forward to report it.

We regularly review decisions and actions and relevant policies are updated to reflect any lessons learnt. We look out for potential patterns of concerning, problematic or inappropriate behaviour. Where a pattern is identified, we decide upon an appropriate course of action.

All staff will reassure victims that they are being taken seriously and that they will be supported and kept safe. Victims will never be given the impression that they are creating a problem by reporting abuse, sexual violence or sexual harassment. Nor will a victim ever be made to feel ashamed for making a report. We will also offer appropriate support to the perpetrator and any other children involved.

All staff will understand that they should follow our safeguarding procedures for reporting a concern if they are worried about child on child abuse. The DSL will respond to any concerns related to child on child abuse in line with guidance outlined in Part five of '*Keeping Children Safe in Education*.' We will ensure that all concerns, discussions and decisions reached are clearly recorded and any identified actions are followed up.

We will work with other agencies including the police and Children's Social Care, as required to respond to concerns about sexual violence and harassment. We will seek consultations where there are concerns or worries about developmentally inappropriate or harmful sexual behaviour from the Harmful Sexual Behaviour (HSB) Team as required so that we ensure we are offering the right support to the child(ren).

Support will depend on the circumstances of each case and the needs of the child, it may include completion of risk assessments to support children to remain in school whilst safeguarding other children and the victim, delivery of early intervention in respect of HSB and/or referral to [The Harbour Centre Sexual Assault Referral Centre](#) (SARC) where a pupil discloses a rape, an attempted rape or a serious sexual assault whether this has happened recently or in the past. The assault does not have to have taken place in Norfolk but the victim must live in Norfolk to access support. The SARC also has a 24/7 helpline 01603 276381 if pupils or staff need to speak to a Crisis Worker for help & advice. Referral forms can be found on [The Harbour Centre website](#). The DSL will always contact the police in cases of rape and serious sexual assault as per the guidance [When to call the Police: a guide for schools and colleges, National Police Chiefs Council](#).

Modern Slavery

We understand that modern slavery encompasses human trafficking and slavery, servitude and forced or compulsory labour. Exploitation can take many forms, including sexual exploitation, forced labour, slavery, servitude, forced criminality and the removal of organs. We refer to the DfE guidance [Modern slavery: how to identify and support victims](#) for concerns of this nature. for concerns of this nature.

Safeguarding responses to children who are absent from education

All staff should be aware of the safeguarding responsibilities for children who are absent from education, particularly on repeat occasions, or for prolonged periods, to help identify the risk of abuse and neglect, including sexual abuse or exploitation, and to help prevent the risks of them going missing in future.

We adhere to the following procedures and processes to ensure there is an appropriate safeguarding response to children who are absent from education:

- An attendance register is taken at the start of each session
- We make every effort to contact parents and carers and follow up with the emergency contacts held;
- We hold at least two emergency contact numbers for each of the pupils on our roll wherever possible.
- Staff will alert DSLs to any concerns raised regarding children who are absent from school;

Mental Health

All staff are made aware, through training, that mental health problems can, in some cases, be an indicator that a child has suffered or is at risk of suffering abuse, neglect or exploitation. Our staff are well placed to observe children day-to-day and identify those whose behaviour suggests that they may be experiencing a mental health problem or be at risk of developing one.

We understand that where children have suffered abuse and neglect, or other potentially traumatic adverse childhood experiences, this can have a lasting impact throughout childhood, adolescence and into adulthood. Therefore, through training, staff are aware of how children's experiences, can impact on their mental health, behaviour and education. All staff are aware that if they have a mental health concern about a child that is *also* a safeguarding concern, they should take immediate action by passing the information on to a Designated Safeguarding Lead.

Online Safety

All staff are aware that technology is a significant component in many safeguarding and wellbeing issues. Children are at risk of abuse online as well as face to face. We understand that in many cases abuse will take place concurrently via online channels and in daily life. We know that children can also abuse other children online, this can take the form of abusive, harassing, and misogynistic messages, the non-consensual sharing of indecent images, especially around chat groups, and the sharing of abusive images and pornography.

As part of the requirement for staff to undergo regular updated safeguarding training, online safety training is also delivered. We will ensure online safety is a running and interrelated theme throughout the curriculum and is reflected in relevant policies, teacher training, the role and responsibilities of the designated safeguarding lead and any parental engagement.

We recognise that technology, and risks and harms related to the internet evolve and change rapidly. Therefore, we carry out an annual review of our approach to online safety, supported by a risk assessment (on at least an annual basis) that considers and reflects the risks that children face in our setting. We also communicate with parents and carers to reinforce the importance of children being safe online.

Cybercrime

We understand that cybercrime is criminal activity committed using computers and/or the internet. It is broadly categorised as either 'cyber-enabled' (crimes that can happen off-line but are enabled at scale and at speed on-line) or 'cyber dependent' (crimes that can be committed only by using a computer).

If there are concerns about a child in this area, the designated safeguarding lead will consider a referral to the [Cyber Choices programme](#) which aims to intervene where young people are at risk of committing, or being drawn into, low level cyber-dependent offences and divert them to a more positive use of their skills and interests. It aims to intervene where young people are at risk of committing, or being drawn into, low level cyber-dependent offences and divert them to a more positive use of their skills and interests.

Domestic Abuse

All staff are aware that domestic abuse can encompass a wide range of behaviours and may be a single incident or a pattern of incidents. That abuse can be, but is not limited to, psychological, physical, sexual, financial or emotional. We understand that children can be victims of domestic abuse, and this can have a detrimental and long-term impact on their health, well-being, development, and ability to learn. We are aware of the [Norfolk Integrated Domestic Abuse Service \(NIDAS\)](#) and signpost victims to the service. [Norfolk and Suffolk Victim Care](#) are available to offer support where threshold for NIDAS support has not been met.

Children with special educational needs and disabilities or physical health issues

We recognise that children with special educational needs or disabilities (SEND) or certain health conditions can face additional safeguarding challenges such as

- assumptions that indicators of possible abuse such as behaviour, mood and injury relate to the child's condition without further exploration;
- these children being more prone to peer group isolation or bullying (including prejudice-based bullying) than other children;
- the potential for children with SEND or certain medical conditions being disproportionately impacted by behaviours such as bullying, without outwardly showing any signs; and
- communication barriers and difficulties in managing or reporting these challenges.

We also recognise that pupils who attend Alternative Provision will often have complex needs and due to this we are aware of the additional risk of harm these children may be vulnerable to.

Children who are lesbian, gay, bi or trans (LGBT)

The fact that a child or a young person may be LGBT is not in itself an inherent risk factor for harm. However, in line with 'Keeping Children Safe in Education', we recognise that children who are LGBT or those perceived by other children to be LGBT could potentially be more vulnerable and therefore we work to reduce any additional barriers faced. We provide a safe space for these children to speak out or share their concerns with members of staff. Through our curriculum, we counter homophobic, biphobic and transphobic bullying and abuse.

RECORDS AND INFORMATION SHARING

If staff are concerned about the welfare or safety of any child at our school, they will record their concern either on the agreed reporting form. Any concerns should be passed to the DSL without delay.

Any information recorded will be kept in a separate named file, in a secure cabinet if a paper system is used and not with the child's academic file. These files will be the responsibility of the DSL. Child protection information will only be shared within school on the basis of 'need to know in the child's interests' and on the understanding that it remains strictly confidential.

Child protection information will be kept up to date. Each concern logged will include:

- a clear and comprehensive summary of the concern;
- details of how the concern was followed up and resolved;
- a note of any action taken, decisions reached and the outcome.

Records of concern, copies of referrals, invitations to child protection conferences, core groups and reports will be stored on the child's file whether an electronic or paper system is used. All our safeguarding records will include;

WORKING WITH PARENTS & CARERS

We are committed to working in partnership with parents/carers to safeguard and promote the welfare of children and to support them to understand our statutory responsibilities in this area.

When new pupils start, parents and carers will be informed that we have a safeguarding policy. A copy will be provided to parents on request and is available on the school website. Parents and carers will be informed of our legal duty to assist our colleagues in other agencies with child protection enquiries and what happens should we have cause to contact Norfolk Children's Advice & Duty Service.

We are committed to working with parents positively, openly and honestly. We ensure that all parents are treated with respect, dignity and courtesy. We respect parents' rights to privacy and confidentiality and will not share sensitive information unless we have permission, or it is necessary to do so in order to safeguard a child from harm.

We will seek to share with parents any concerns we may have about their child *unless* to do so may place a child at increased risk of harm. A lack of parental engagement or agreement regarding the concerns the school has about a child will not prevent the DSL making a referral to Norfolk CADS in those circumstances where it is appropriate to do so.

In order to keep children safe and provide appropriate care for them, 4ward sports requires parents to provide accurate and up to date information regarding:

- Full names and contact details of all adults with whom the child normally lives;
- Full names and contact details of all persons with parental responsibility (if different from above);
- Emergency contact details (if different from above);

- Full details of any other adult authorised by the parent to collect the child from school (if different from the above).

We will retain this information on the pupil file. We will only share information about pupils with adults who have parental responsibility for a pupil or where a parent has given permission.

SAFER RECRUITMENT

4ward sports will use the recruitment and selection process to deter and prevent people who are unsuitable to work with children from applying for or securing employment, or volunteering opportunities.

We require details of a candidate's present (or last) employment and reason for leaving; full employment history, (since leaving school, including education, employment and voluntary work) including reasons for any gaps in employment and evidence of original academic certificates. We do not accept testimonials and insist on taking up references prior to interview. We will question the contents of application forms if we are unclear about them, and shortlisted candidates will be asked to complete a self-declaration of their criminal record or information that would make them unsuitable to work with children.

We use a range of selection techniques to identify the most suitable person for the post. Structured questions are agreed by the interview panel and any potential areas of concern are explored to determine the applicant's suitability to work with children.

We will undertake Disclosure and Barring Service checks and other pre-employment checks as outlined in *'Keeping Children Safe in Education'* to ensure we are recruiting and selecting the most suitable people to work with our children.

We recognise that safer recruitment is not just about carrying out the right DBS checks and is not limited to recruitment procedures. Therefore, we understand the importance of continuous vigilance, maintaining an environment that deters and prevents abuse and challenges inappropriate behaviour. Further information about all of these processes can be found in our Recruitment and Selection policy.

SAFER WORKING PRACTICE

All adults who come into contact with our children have a duty of care to safeguard and promote their welfare. There is a legal duty placed upon us to ensure that all adults who work with or on behalf of our children are competent, confident and safe to do so.

All staff will be provided with a copy of our code of conduct at induction. They will be expected to know our Code of Conduct and policy for positive handling and carry out their duties in accordance with this advice. There will be occasion when some form of physical contact is inevitable, for example if a

child has an accident or is hurt or is in a situation of danger to themselves or others around them. However, at all times the agreed policy for safe restraint must be adhered to.

If staff, visitors, volunteers or parent helpers are working with children alone they will, wherever possible, be visible to other members of staff. They will be expected to inform another member of staff of their whereabouts in school, who they are with and for how long. Doors, ideally, should have a clear glass panel in them and be left open.

MANAGING ALLEGATIONS AGAINST STAFF & VOLUNTEERS

Allegations that may meet the harms threshold

Our aim is to provide a safe and supportive environment which secures the wellbeing and very best outcomes for the children at our school. We do recognise that sometimes the behaviour of adults may lead to an allegation of abuse being made.

Allegations sometimes arise from a differing understanding of the same event, but when they occur, they are distressing and difficult for all concerned. We also recognise that many allegations are genuine and there are some adults who deliberately seek to harm or abuse children. We work to the thresholds for harm as set out in *'Working Together to Safeguard Children'* (2018) and *'Keeping Children Safe in Education'*, DfE (2023) below. An allegation may relate to a person who works / volunteers with children who has:

- behaved in a way that has harmed a child, or may have harmed a child and/or;
- possibly committed a criminal offence against or related to a child and/or;
- behaved towards a child or children in a way that indicates he or she may pose a risk of harm to children; and/or
- behaved or may have behaved in a way that indicates they may not be suitable to work with children.

The 4th bullet point above recognises circumstances where a member of staff or volunteer is involved in an incident outside of school/college which did not involve children but could have an impact on their suitability to work with children; this is known as transferrable risk.

School we recognise our responsibility to report / refer allegations or behaviours of concern and / or harm to children by adults in positions of trust who are not employed by the School to the LADO service directly at lado@norfolk.gov.uk These are adults such as those in the voluntary sector, taxi drivers, escorts, and fosters carers.

The first point of contact for schools regarding concerns and/ or allegation issues is via the Local Authority Education Duty Desk on 01603 307797. A Duty Advisor (not a LADO) will give advice and guidance on next steps. If the advice is to make a referral to the LADO service then the [LADO referral form](#) should be completed. The completed LADO referral form is then sent via e-mail to: LADO@norfolk.gov.uk.

If an allegation is made or information is received about *any* adult who works/ volunteer in our setting which indicates that they may be unsuitable to work / volunteer with children, the member of staff receiving the information should inform Neil Ward. This includes concerns relating to any staff and volunteers. Should an allegation be made against Neil Ward, this will be reported to the School head teacher.

Any member of staff or volunteer who does not feel confident to raise their concerns with the Headteacher or Neil Ward, they should contact the LADO directly via email to lado@norfolk.gov.uk

[information and guidance documents in relation to the LADO process](#), forms, leaflets and the Allegations against Persons who Work/Volunteer with Children Procedures are found on the Norfolk Safeguarding Children Partnership website. Further national guidance can be found at: [Advice on whistleblowing](#). The [NSPCC whistleblowing helpline](#) is also available for staff who do not feel able to raise concerns regarding child protection failures internally. Staff can call: 0800 028 0285 – the line is available from 8:00am to 8:00pm, Monday to Friday or via e-mail: help@nspcc.org.uk.

4ward sports has a legal duty to refer to the Disclosure and Barring Service anyone who has harmed, or poses a risk of harm, to a child, or if there is reason to believe the member of staff has committed one of a number of listed offences, and who has been removed from working (paid or unpaid) in regulated activity or would have been removed had they not left. The DBS will consider whether to bar the person. If these circumstances arise in relation to a member of staff at our school, a referral will be made as soon as possible after the resignation or removal of the individual in accordance with advice from the LADO and/or HR. 4ward sports must also consider whether to refer the case to the Secretary of State (via the Teaching Regulation Agency) if a teacher is dismissed or the setting ceases to use the services of a teacher because of serious misconduct or might have dismissed them or ceased to use their services had they not left first.

Concerns that do not meet the harm threshold.

The term 'low-level' concern does not mean that it is insignificant, it means that the behaviour towards a child does not meet the thresholds as stated above. In Norfolk the 'low level' concern process is to consult with the Local Authority Education Duty Desk on 01603 307797. At we recognise a low-level concern to be something which is

- inconsistent with the staff code of conduct, including inappropriate conduct outside of work; and
- does not meet the allegations threshold or is otherwise not considered serious enough to consider a referral to the LADO.

We promote an open and transparent culture in which all concerns about all adults working in or on behalf of 4ward sports are dealt with promptly and appropriately. Through training, staff are made aware of what low level concerns are and understand the importance of reporting and these types of concerns in writing.

staff will report all low level concerns to the DSL.

Through training and induction, we ensure that all staff understand the importance of self-referring, where, for example, they have found themselves in a situation which could be misinterpreted, might appear compromising to others, and/or on reflection they believe they have behaved in such a way that they consider falls below the expected professional standards.

We understand the importance of recording low-level concerns and the actions taken in light of these being reported. The records are kept confidential and stored securely. We will review the records we hold to identify potential patterns and take action. This could be through a disciplinary process but also by referring to the Local Authority Education Duty Desk on 01603 307797. Please note, where a child, parent/carer or staff member makes an allegation of harm, this will not be considered as a 'low level' concern without consultation with the Local Authority Education Duty Desk or the LADO service directly.

We recognise that low level concerns should not be included in references unless they relate to issues which would normally be included in a reference, for example, misconduct or poor performance. However, where a low-level concern (or group of concerns) has met the threshold for referral to the LADO and found to be substantiated, it should be referred to in a reference.

RELEVANT POLICIES

To underpin the values and ethos of our club and our intent to ensure that pupils at our session are appropriately safeguarded the following policies are also included under our safeguarding umbrella:

- Staff Code of Conduct
- Anti-Bullying
- Behaviour which includes measures to prevent bullying (including cyberbullying, prejudice-based and discriminatory bullying)
- Whistleblowing
- Online Safety
- Health and Safety including site security
- Harassment and discrimination including racial abuse
- Meeting the needs of pupils with medical conditions
- First aid

Appendix 1: Draft Recording Form for Safeguarding Concerns

Enter your school name/logo here

Staff, volunteers, and regular visitors are required to complete this form and pass it to Neil Ward] if they have a safeguarding concern about a child in our school.

Full name of child	Date of Birth	Class/Tutor/Form group	Your name and position in school

Nature of concern/disclosure
<p>Please include where you were when the child made a disclosure, what you saw, who else was there, what did the child say or do and what you said.</p> <p>Time & date of incident:</p> <p>Who are you passing this information to? Name:</p> <p>Position:</p> <p>[Ensure that if there is an injury this is recorded (size and shape) and a body map is completed] [Make it clear if you have a raised a concern about a similar issue previously]</p>
<p>Your signature:</p> <p>Time form completed: Date:</p>

Enter your school name/logo here

Time form received by DSL:

Action taken by DSL:

Referred to...?

Attendance
Lead

Police

Just One
Norfolk

CADS

PSA

Other

Date:

Time:

Parents informed? Yes / No (If No, state reason)

Feedback given to...?

Pastoral team

Teacher

Child

Person who recorded disclosure

Further Action Agreed:

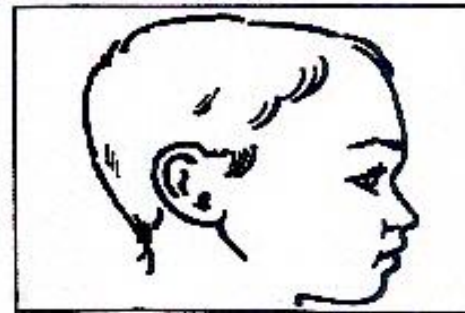
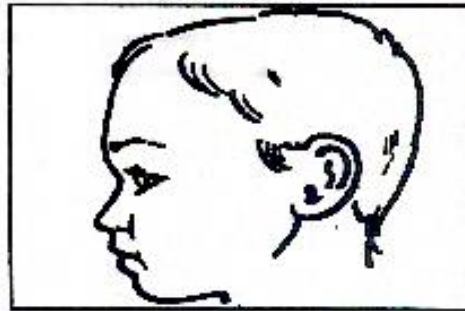
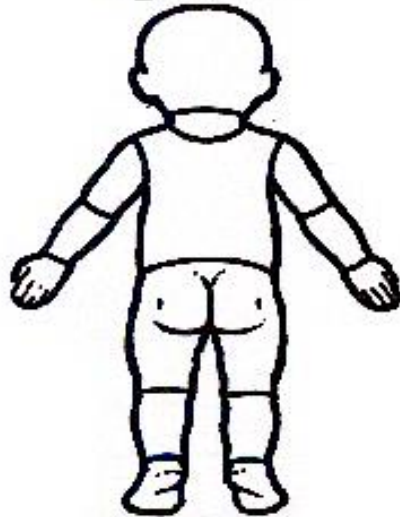
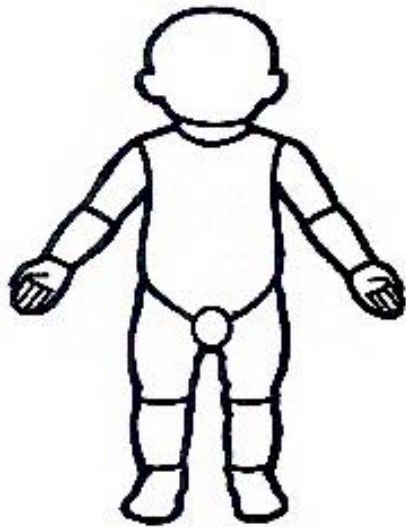
e.g. School to instigate an Early Help Assessment Plan, assessment by Children's Services

Full name:

DSL Signature:

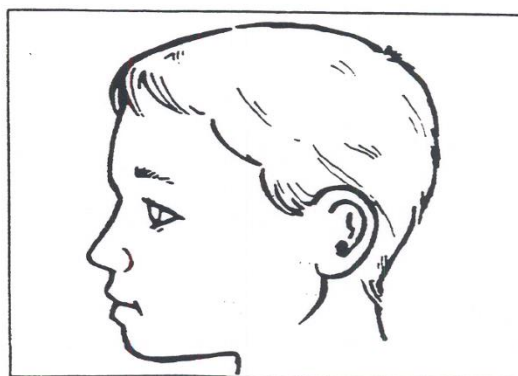
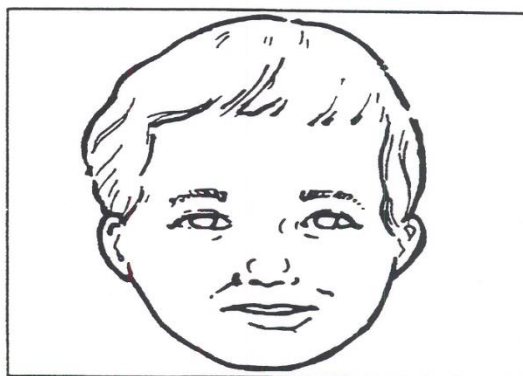
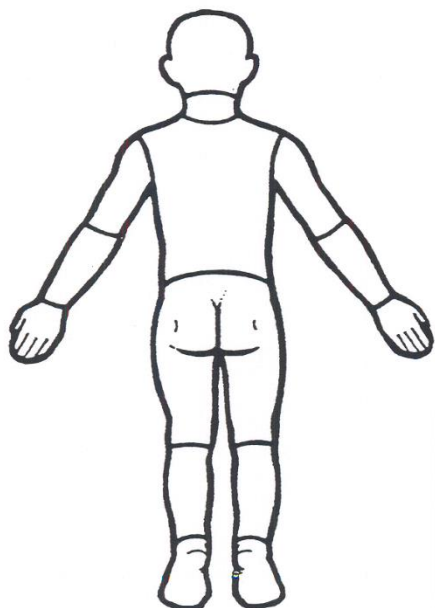
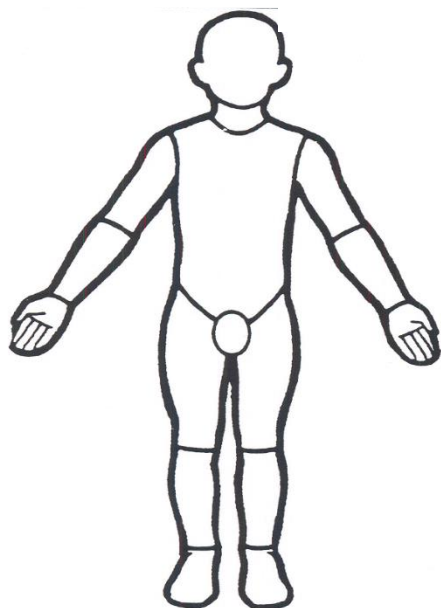
Date:

Young Child



Indicate clearly where the injury was seen and attach this to the Recording Form

Older Child



Indicate clearly where the injury was seen and attach this to the Recording Form

We all have a statutory duty to safeguard and promote the welfare of children, and at our school we take this responsibility seriously.

If you have any concerns about a child or young person in our school, you must share this information immediately with our Designated Safeguarding Lead (DSL) or one of the alternate post holders.

Do not think that your worry is insignificant if it is about hygiene, appearance or behaviour – we would rather you told us as we would rather know about something that appears small than miss a worrying situation.

If you think the matter is very serious and may be related to child protection, for example, physical, emotional, sexual abuse or neglect, you must find one of the designated professionals detailed below and provide them with a written record of your concern. A copy of the form to complete is attached to this and others can be obtained from Please ensure you complete all sections as described.

If you are unable to locate them ask a member of the school office staff to find them and to ask them to speak with you immediately about a confidential and urgent matter.

Any allegation or low-level concern about a member of staff, a child's foster carer or a volunteer should be reported immediately to the Headteacher. If an allegation is made about the Headteacher you should pass this information to the Chair of the Governing Body. Alternatively, you can contact the Local Authority Duty Desk on 01603 307797. [NSPCC whistleblowing helpline](#) is also available for staff who do not feel able to raise concerns regarding child protection failures internally. Staff can call: 0800 028 0285 – the line is available from 8:00am to 8:00pm, Monday to Friday or via e-mail: help@nspcc.org.uk.

The people you should talk to in school are:

Designated Safeguarding Lead (DSL):

Location of office:

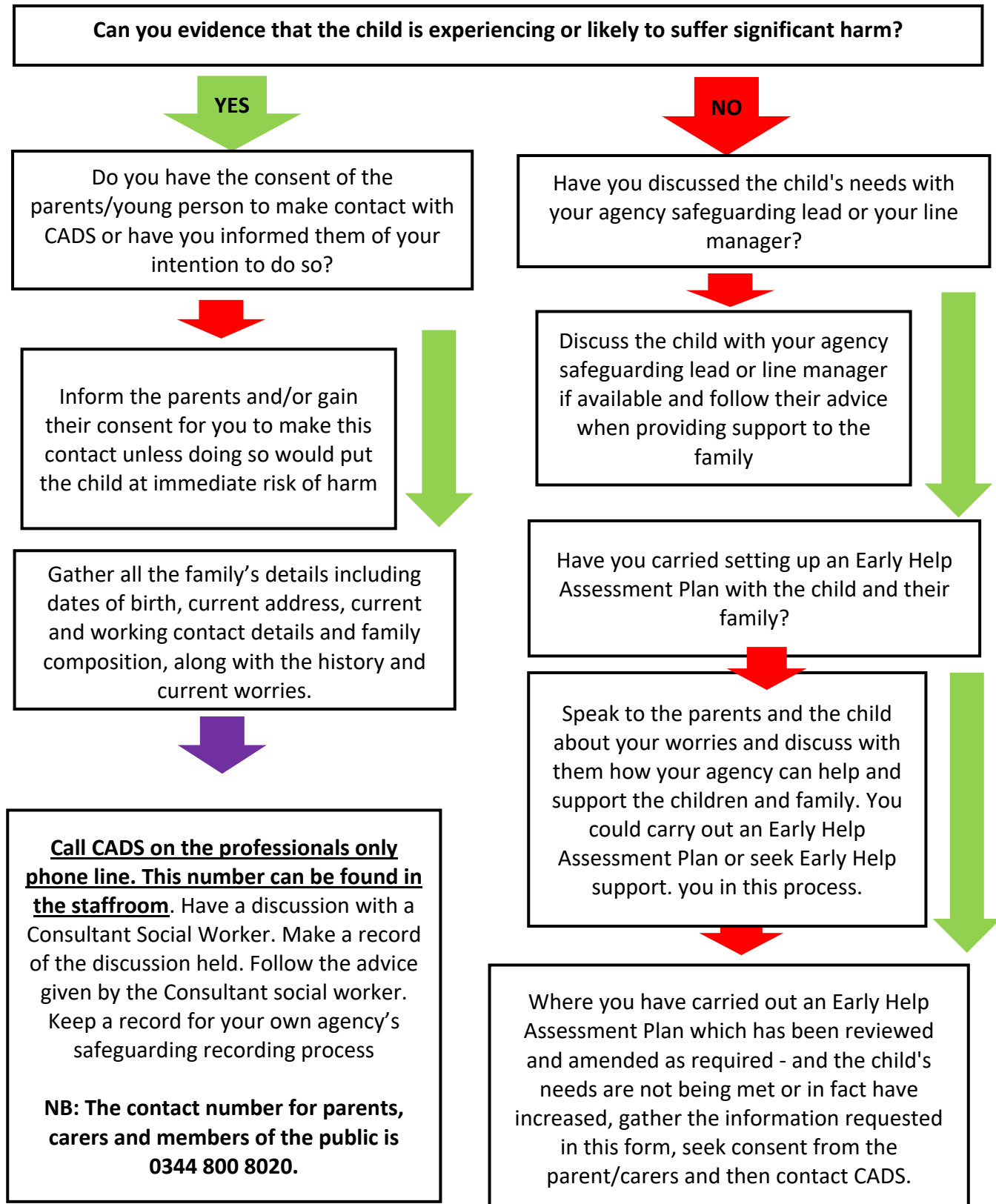
Contact Number:

Deputy Designated Lead:

Location of office:

Contact Number:

Before contacting CADS, please answer the following questions and follow the advice provided:



Guidance for Schools, Colleges & Alternative Education Providers

Education Quality Assurance & Intervention Service

Duty Desk

